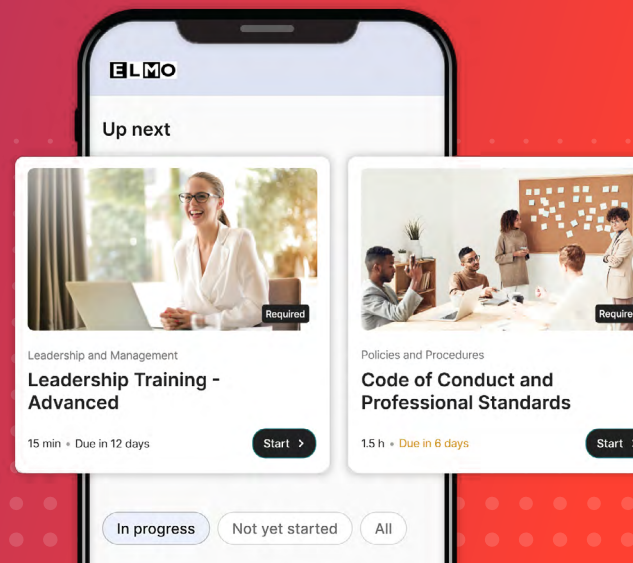


ELMOHR

Now your employees can learn anywhere, anytime, with the **ELMOHR app**.



We know how hectic the workday can be, especially for those constantly on the move—whether on a construction site, in a hospital, at a manufacturing plant, or in a classroom. That’s why we’ve designed the **ELMOHR app** to fit seamlessly into busy schedules, ensuring that training is always accessible, whenever and wherever it’s needed.



Complete training anywhere

Employees can complete courses from ELMO’s content library and custom-built training programs created from ELMO’s course builder.



Expert-led wellbeing video resources

Expert-led mental health & wellbeing videos are in partnership with EQ Minds, Lifeline, and the University of New South Wales.



Mobile push notifications

Automatic enrollment with push notifications for new courses and upcoming deadlines.

Once logged in, employees can easily view their assigned eLearning courses, including what’s in progress and what’s yet to be started, ensuring flexibility in their training journey.

Enhance training with ELMO’s assessment tools, which offer a range of question types and styles to meet diverse learning objectives and keep employees engaged.

Getting Started is Easy! Find ELMOHR on App Store or Google Play.



‘Your Mind Matters’ Video Resources, available exclusively on ELMOHR.

Empower your team with on-demand access to expert-led mental health and wellbeing videos. Available only on the **ELMOHR app**, these videos are designed to foster resilience, positivity, and support in the workplace, in partnership with Lifeline, UNSW, and EQ Minds.

Self-care with EQ Minds:

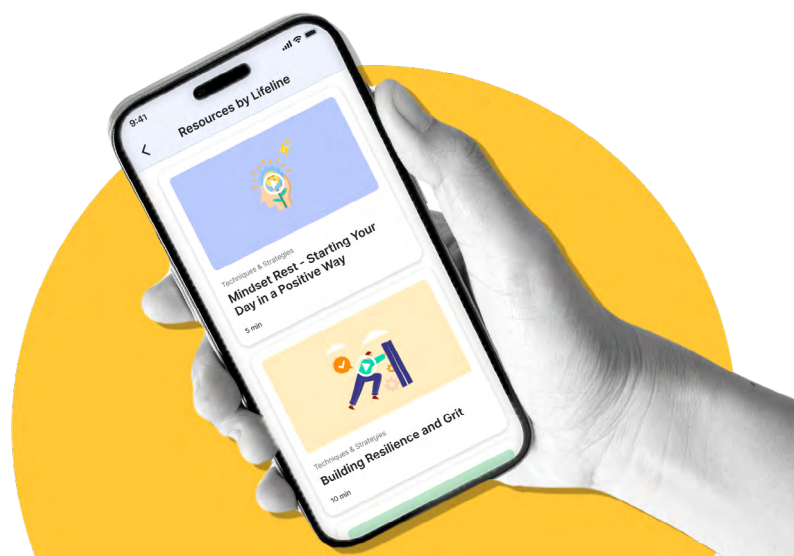
- Mindset rest: starting your day in a positive way
- Building resilience and grit
- Reducing stress and burnout
- Developing healthy sleep routines

Support for others with Lifeline:

- Understanding financial stress
- Understanding common mental health conditions
- Identifying domestic and family violence
- Coping with grief and loss

Workplace Wellbeing with University of New South Wales:

- Supportive leadership styles
- The power of positivity
- Navigating psychosocial hazards in the workplace
- Strategies for HR professionals: Improving communication and managing wellbeing



Founded in 2002, ELMO Software is the trusted provider of cloud-based HR technology solutions to 2,500+ mid-sized organisations and over one million end users across Australia and New Zealand.



elmosoftware.com.au | elmosoftware.co.nz